

Trombone 3

Rhapsody on 'Eventide'

John McEnerney

$\text{♩} = 100$

67 18

90

16 12/8

113

$\text{♩} = 100$

$\text{♩} = 80$

$\text{♩} = 80$

16 16 64

212

8

225

$\text{♩} = 60$

mf

230

235

240

Rhapsody on 'Eventide'

2

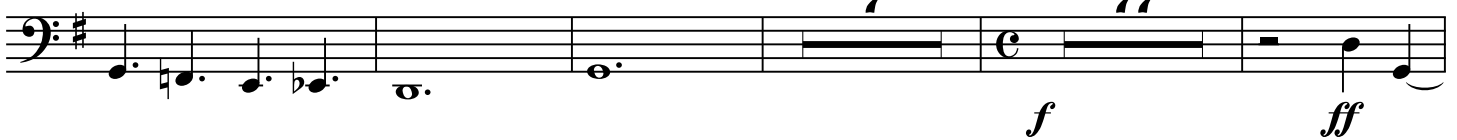
245



250



255



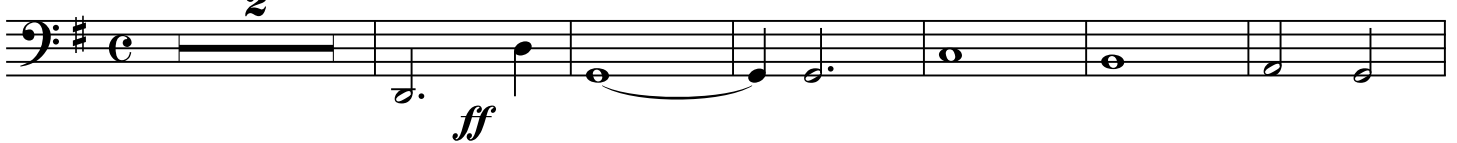
343



350



405



413



418

