

Trombone 1

Rhapsody on 'Eventide'

John McEnerney

$\text{♩} = 100$

67 18

90 16 12

$\text{♩} = 100$ $\text{♩} = 80$ $\text{♩} = 80$

113 16 16 32

178

182

185

188

191 32 $\text{♩} = 60$

mf

Rhapsody on 'Eventide'

2

227



232



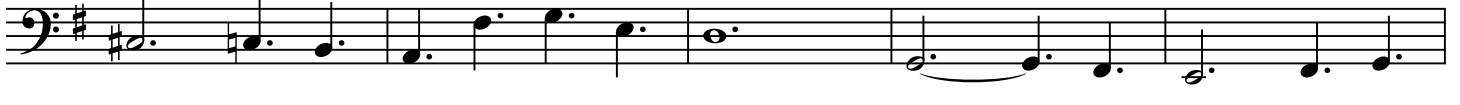
237



242



247



252



257



346



352



Rhapsody on 'Eventide'

409



416



421

